

2. Violine

Metamorphosen

Tempo quasi Andante, Dynamik quasi piano

Volkmar Fritsche

The musical score for Violin 2, titled "Metamorphosen" by Volkmarr Fritsche, is presented in a single system with six staves. The tempo is "Tempo quasi Andante" and the dynamics are "quasi piano". The score is divided into measures, with measure numbers 5, 6, 11, 16, 21, 25, 26, 30, 32, 35, 39, 45, 47, 50, and 55 marked. The key signature is one flat (B-flat). The time signature is 2/4. The score includes various musical notations such as rests, notes, and dynamic markings. The first staff (measures 1-11) is marked with a 5 and a 6. The second staff (measures 12-25) is marked with a 5, 21, 4, and 25. The third staff (measures 26-32) is marked with a 4, 30, and 32. The fourth staff (measures 33-44) is marked with a 3, 39, and 44. The fifth staff (measures 45-50) is marked with a 45, 47, and 50. The sixth staff (measures 51-55) is marked with a 55. The score includes dynamic markings such as *ppp*, *p*, *cresc. poco a poco*, *div. trem.*, and *f*. The score also includes tempo markings such as *Largo* and *a tempo (Andante)*. The score is written for a single violin, with the key signature of one flat and a time signature of 2/4.

5 6 11 5

16 5 21 4 25

26 *Largo* 4 30 *a tempo (Andante)* 32 3

35 *Largo* 3 39 *Scherzando* ($\text{♩} = \text{ca. } 180$)

44 45 47

cresc. poco a poco div. trem.

50

55

f

(59)

(63)

(65)

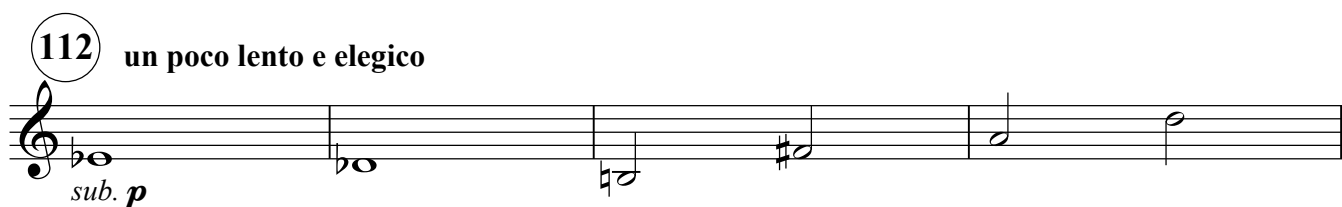
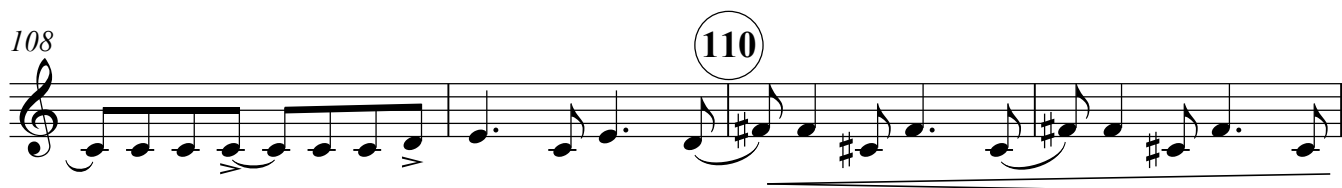
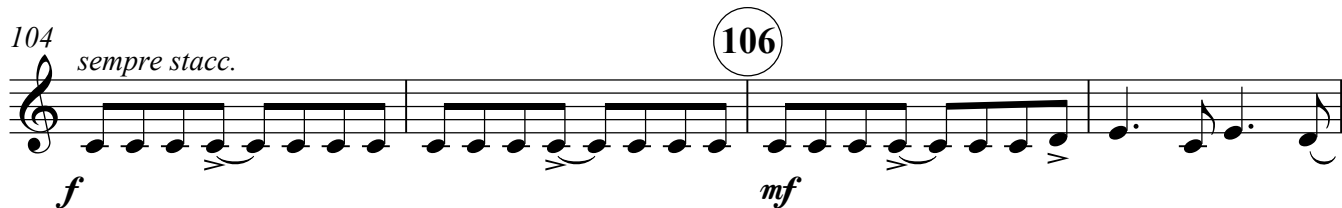
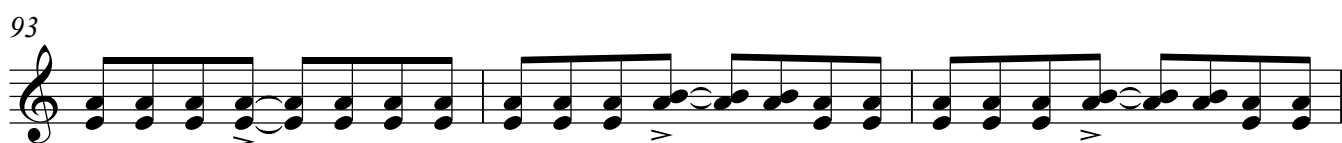
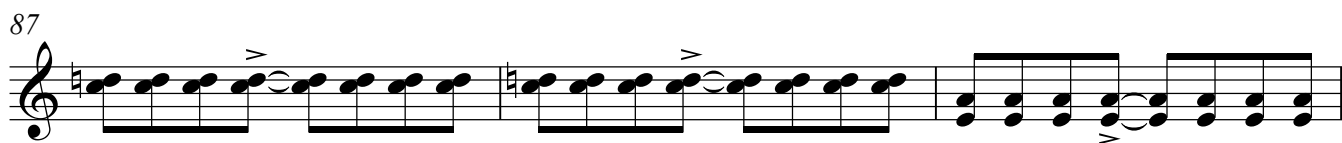
69 (70)

(73) un poco lento 2 (75) ancora più lento

p c.s. tastiera

80 (81) *Feroce* ♩=ca.106
Allegro, ma non troppo
sempre stacc.

pp ppp f



116 a tempo feroce

118



120

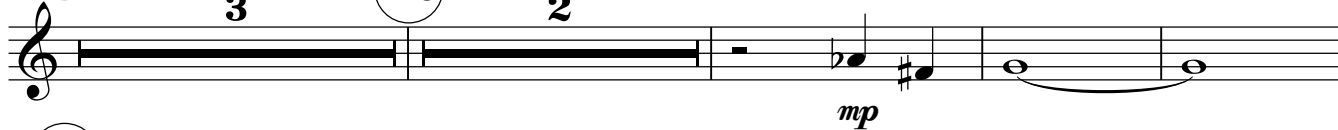


125

3

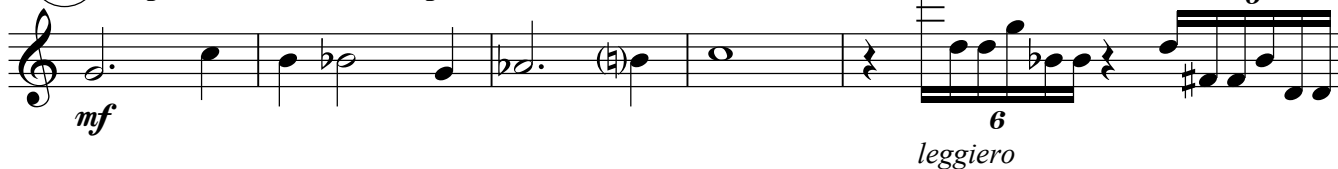
128

2

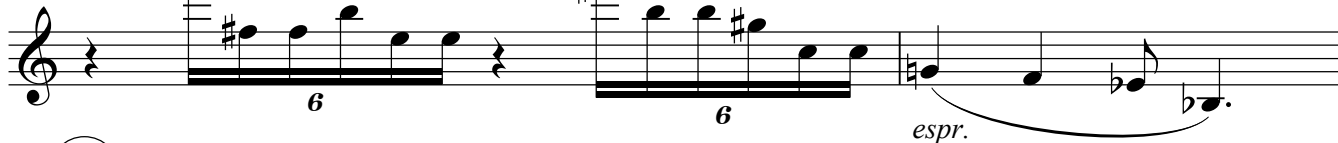


133

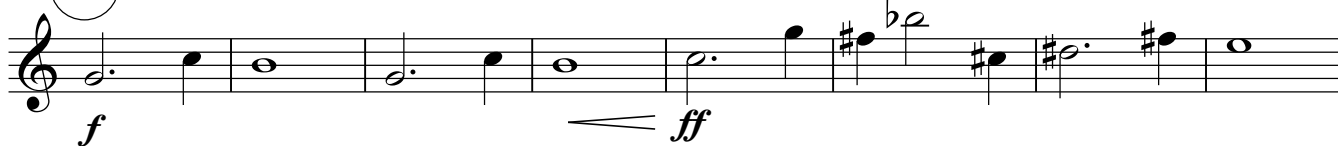
un poco lento e molto espressivo



138



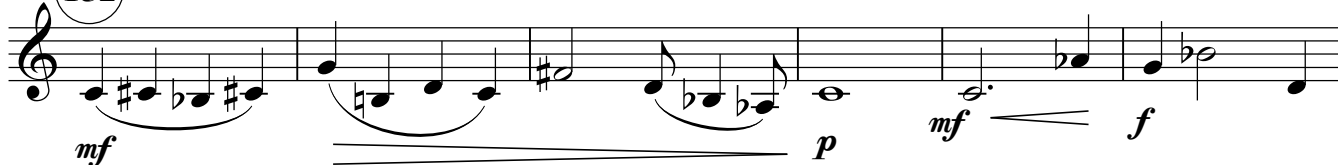
140



148



152



158

160



170

f

molto rit. . .

183

The musical score for Example 183 is written on a single staff with a treble clef and a 2/4 time signature. The score begins with a whole rest. This is followed by a measure with a 3/4 time signature containing a dotted eighth note with a sharp sign. The next measure contains a dotted eighth note with a sharp sign, which is tied to the following measure. The following measure contains a half note. The next measure contains a whole rest. This is followed by a measure with a 3/4 time signature containing a dotted eighth note with a sharp sign. The final measure contains a whole rest. The dynamic markings *p* and *mp* are placed below the staff. A fermata is placed over the dotted eighth note in the measure with the 3/4 time signature.

Example 190 is a musical notation on a single staff. It begins with a treble clef and a circled number 190. The notation consists of a sequence of measures: a 3/4 measure with a whole note and an accent; a 2/4 measure with a whole rest and an accent; a 3/4 measure with a whole note and an accent; a 2/4 measure with a whole rest and an accent; a 3/4 measure with a whole note and an accent; a 2/4 measure with a whole rest and an accent; and a final 3/4 measure with a whole note and an accent.

199

mf

204

205

f

209

211

ff

[illegible]

214 *mp* *sf* *mf*

218 *poco gliss.*

222 *rit.* *pizz.* *f* *mf* *pp* **223** tempo corrente

228 *f* *arco* **231**

235 (continuare tempo corrente e accel.) *p* *pp*

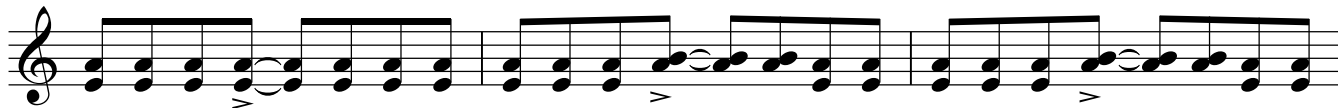
243 Feroce Tempo I
Allegro ma non troppo
sempre stacc. *ff*

246 *f* **247**

249

252 **254**

255



258

*ff*

262



266

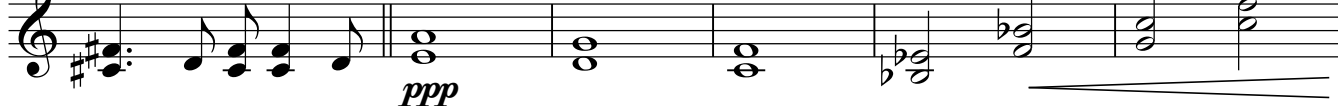
*f* sempre stacc.*mf* ma feroce

269

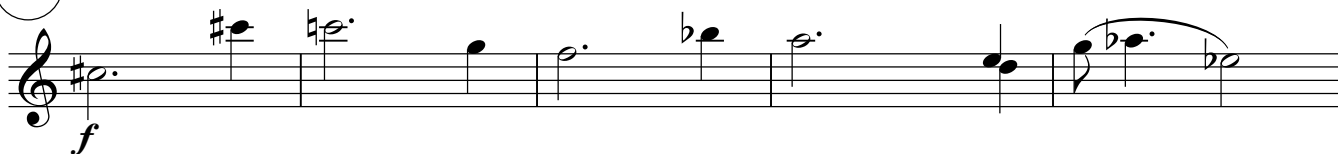


273

Lento elegiaco e pp subito

sul tasto*ppp**accel.* - - - - -

279 a tempo I (♩=106) molto espressivo



284

*leggiero*

288



V.S.

294



302

tempo mosso
un poco scherzando



307



311

molto rit.



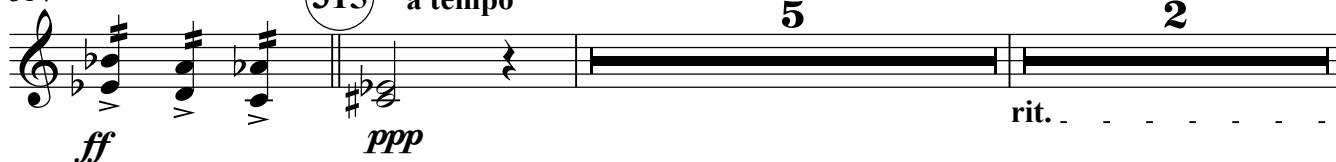
314

315

a tempo

5

2



323 (sempre ritenuto)

325

2



327 Allegro

2



332

334



339

342 EPILOG (Lento)

pp

Poco a poco ritardando

344

ppp

350

2

con sord.



A3